

172 mm

Notes for Authors of 2nd TKSEE

247 mm

Taro Tokushima* and Jiro Daigaku**

*Department of Mechanical Engineering, The University of Tokushima (Tokushima 770-8506, Japan)

** Institute of Technology and Science, The University of Tokushima (Tokushima 770-8506, Japan)

An example of the manuscript for 2nd TKSEE is shown. *****

***** **

***** **

10 mm

10 mm

Key words: Engineering education, Primary education, Faculty development (FD), JABEE/ABEEK, Capstone design, Project activities, University life, Creativity development e Processing, *****

1. Style, Margins and Fonts

- a. The title of the paper and the list of authors should be formatted to use the full width of the page. Abstracts and Key words should appear after the authors. The remainder of the paper should be formatted to appear as two columns, with a column width of 82 mm and 8 mm between columns.
- b. The paper size should be A4. The document should be typed in an area of 172 mm × 247 mm.
- c. The preferred font is Times Roman. The font of section headings should be Helvetica or equivalent. The title should be 16-point type. The authors: 11pt. The affiliations: 9pt. The section headings: 10pt. The text: 9pt.

2. Length

Length of the paper is limited to 4 pages, including text, illustrations and references. Your paper should be printed on A4 sheet. Papers longer than four pages will be rejected.

3. Title

The title should be typed 2 lines down from top margin in 16-point font and be centered.

4. Authors and Affiliations

The authors' names should be typed in the center below the title. The authors' affiliations should be typed in the center below the authors' names.

5. Abstract and Key Words

Begin the abstract after the list of authors' affiliations. Abstract (maximum 200 words) consists of summary of the main points of the paper. Include 3 to 5 key words after the abstract. All text should be single-spaced.

6. Photos and Drawings

- a. Photos and line drawings, clearly marked by figure numbers, should be positioned at the appropriate location within the text. Figures may occupy the full width of the page if necessary.
- b. Color photos will be printed in Black and White.

7. PDF

Please mind that submission of an electronic copy in PDF format is required. Use Adobe Acrobat/Distiller version 6 or higher to create your PDF file. Do not send MS Word documents. Also do not use undesignated font.

8. Equations

Equations must be allowed sufficient space to ensure clarity. Equations must be numbered consecutively, with the numbers parenthesized at the end of the corresponding line.

$$M(q)\ddot{q} + C(q, \dot{q}) + G(q) + J(q)^T F_e = \tau \quad (1)$$

9. References

- a. Use superscript notation to indicate the reference number in the text, for example¹⁾.
- b. References must be listed by number at the end of the paper.
- c. References should be prepared in the following general format: author, title of article, title of publication, volume and issue number, year of publication, page numbers. Font size is 8pt.

References

- 1) M. Miwa, H. Kawaguchi, K. Douoka, S. Yoneyama, S. Tuchitani, and Y. Koshimoto, "Inner Structure and Elastic Modulus of Micro Cantilever Fabricated Using Micro-StereoLithography", *J. JSEM*, 7-3 (2007), 277–281.
- 2) Chao, Y.J. and Sutton, M.A.: Accurate Measurement of Two- and Three-Dimensional Surface Deformations for Fracture Specimens by Computer Vision, *Experimental Techniques in Fracture* (Epstein, J.S. ed.), VCH Publishers (1993), 59–93.
- 3) Dally, J.W.: *Experimental Stress Analysis*, McGraw-Hill (1978), 374–388.

Table 1 Caption of table

Pitch (μm)	Young's modulus(N/m ²)
10	3.15×10 ⁸
15	3.00×10 ⁸
20	2.83×10 ⁸

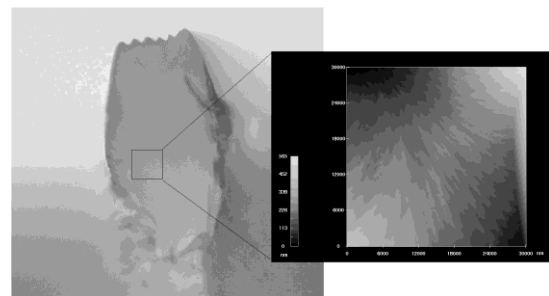


Fig.1 Caption of figure

82 mm